

P810 Mobile Printer WIFI setting Manual

Instructions before setting:

Under **Access mode**, User is able to connect the device to the WiFi hotspot generated by printer. (default WiFi name is Printer001) for communication. The default printer IP is 192.168.1.1.

Under **Station mode**, Router communication is needed. It is necessary to set the printer IP to the same network segment and same Wifi Parameter with connected Router. Setup steps will be shown as follow.

1.How to switch into Access mode or Station mode

Switch Method:

a. Turn off the printer power, quickly press the POWER , then press FEED key, print out “Wifi mode switch”!

b. Press the FEED button to print the information of current mode
Printer will print out “Current Mode:Access Point” or “Current Mode :
Station! ”

c. If the current mode is the mode you want (If the current mode is not you want, press the FEED button to switch into another mode.) , please press the POWER button to print it out “mode configuration

please wait..." After 5-6 seconds, the mode is confirmed, Printer will automatically print out the details of the current mode. Then press the FEED button again to print out IP address information. Finally, press POWER button to exit the switch mode when you're finished setting up. Or after 13-15 seconds, the printer will automatically exits the switch mode, then restart the printer .

```
1.Power on, quick press power then press Feed
WiFi mode switch!

2.Press Feed

Current Mode: Access Point!

3.Press Feed switch mode press power for confirm mode you
want
Module configuration Please wait...

4.Press Feed

Access Point mode : OK
AP = 2

5.Press Feed

AP = Printrt001,12345678,192.168.1.1
Please press the power button to exit!

Exit switch mode!

WiFi mode switch!

Current Mode: Station!

Module configuration Please wait...

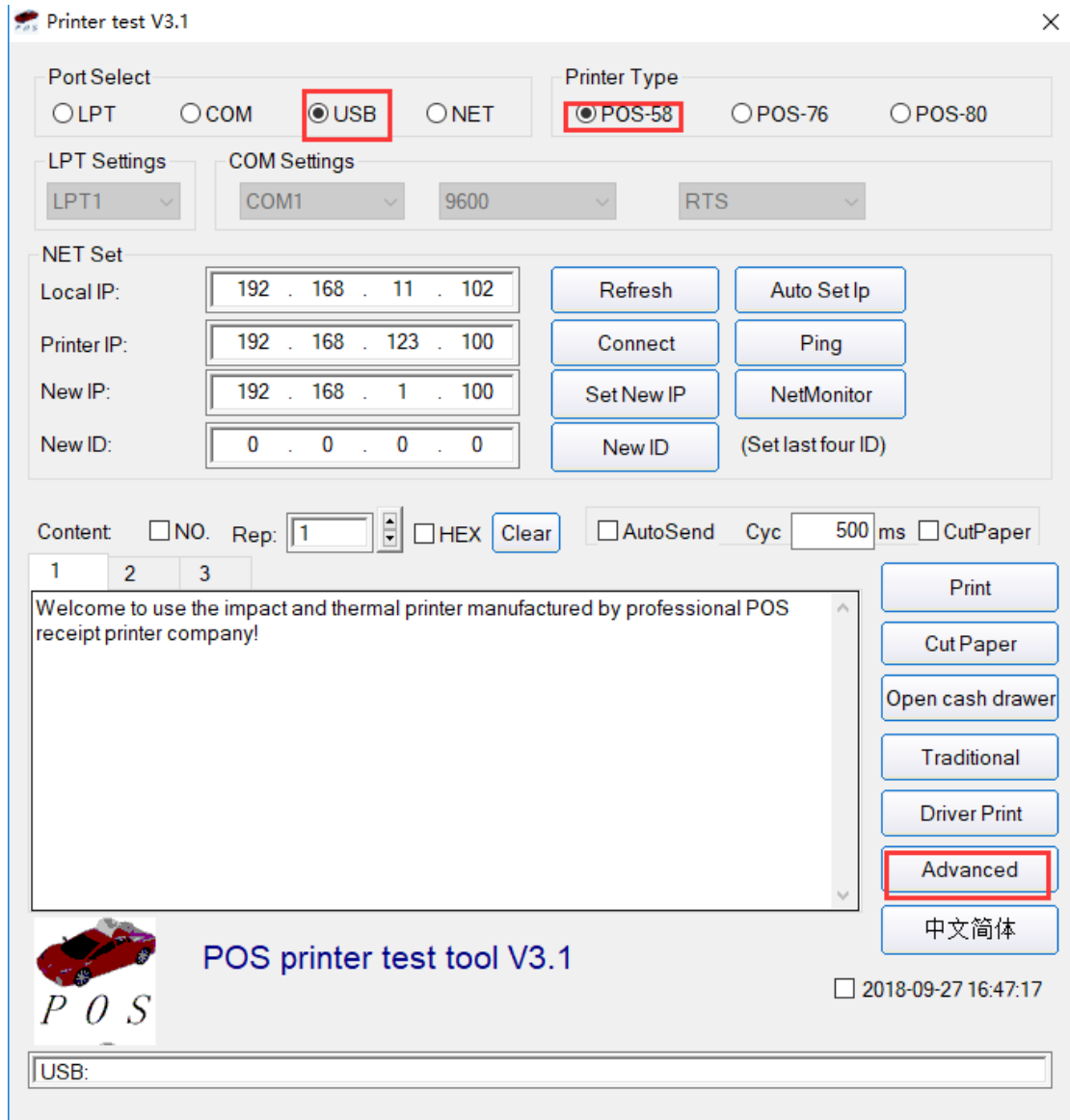
Station mode : OK
ROLE = 1
RAP = Xiaomi_FAAF,poskey3895750,WPA2
Station configuration completed!

WIFI DHCP : OFF
IP Address : 192.168.31.10
RAP = Xiaomi_FAAF,poskey3895750,WPA2
Please press the power button to exit!

Exit switch mode!
```

2.Setup printer's WiFi parameter under station mode

This step needs to be setup by testing tool, as shown below.



Advanced ×

H Parameter Settings:	<input type="button" value="Print H"/>	<input type="button" value="Set Delta"/>	<input type="text" value="5"/>
Code page Settings:	<input type="button" value="PrintCodePage"/>	<input type="button" value="SetCodePage"/>	<input type="text" value="0"/>
NV Logo Test	<input type="button" value="NV Download (1c 70)"/>	<input type="button" value="NV Download (1d 28)"/>	
Barcode Printing test:	<input type="button" value="Print BarCode"/>	<input type="text" value="UPC_A"/>	<input type="text" value="129"/> Height
P76 Buzzer Settings:	<input type="button" value="Set Buzzer"/>	<input type="text" value="OFF"/>	
P76 Density Settings:	<input type="button" value="Set"/>	<input type="text" value="NORMAL"/>	
P80 Black sens:	<input type="button" value="Set Sensitivity"/>	<input type="text" value="12"/>	<input type="text" value="12"/> <input type="checkbox"/> SensH
baud rate settings:	<input type="button" value="Set BaudRate"/>	<input type="text" value="19200"/>	(Only P58 and P76E)
DIP Settings:	<input type="button" value="Set P58 DIP"/>	<input type="button" value="Set P80 DIP"/>	<input type="button" value="Set P76 DIP"/>
2D Barcode test:	<input type="button" value="Print 2D Barcode"/>		
Net Settings:	<input type="button" value="Set Net"/>	<input type="button" value="Set Bluetooth"/>	
USB MODE Settings:	<input type="button" value="USB Printing"/>	<input type="button" value="Virtual COM"/>	
Black Mark Settings:	<input type="button" value="Set 80 BlackMark"/>	<input type="button" value="Set 76 BlackMark"/>	
File data send	<input type="button" value="Open File send"/>		

3. Click the "Set Net", steps to set up network information, as follows:

- a. Printer's IP address setting
- b. Printer subnet mask setting
- c. Printer default gateway setting
- d. WiFi's SSID address: "note: SSID address is the name of the wireless router needed to connect."
- e. WiFi password setting: "note: WiFi password is your wireless router"

password."

f. WiFi SSID encryption type settings: "Note: wireless router encryption type"

g. Finally, press set all.

The screenshot shows a configuration window titled "Net Settings" with a close button (X) in the top right corner. It is divided into two main sections: "Net Settings" and "WiFi Settings".

Net Settings:

- IP Address: 1
- NetMask: 2
- GateWay: 3

Below these fields is a large "Set above contents" button. To the right of the Net Settings section is a small logo with the text "P O S".

WiFi Settings:

- SSID: 4
- WiFi Key: 5
- Key Type: 6

Below these fields is a "Set above contents" button. To the right of the WiFi Settings section is a "Set All" button (highlighted with a red border) and a "Return" button. A red number "7" is positioned above the "Set All" button.

h. If the setup is successful, you can follow the first step to print out the WiFi information.

That's how to setup WiFi, and then you can connect to the Router WiFi, set the printer IP on the device through the network port to print.

```
WiFi mode switch!  
  
Current Mode: Station!  
  
Module configuration Please wait...  
  
Station mode : OK  
ROLE = 1  
RAP = Xiaomi_FAAF,poskey3895750,WPA2  
Station configuration completed!  
  
WIFI DHCP : OFF  
IP Address : 192.168.31.10  
RAP = Xiaomi_FAAF,poskey3895750,WPA2  
Please press the power button to exit!  
  
Exit switch mode!
```

That's how to setup WiFi under station mode, and then you can connect to the Router Wifi ,setup the printer IP on the device through the network port and print.